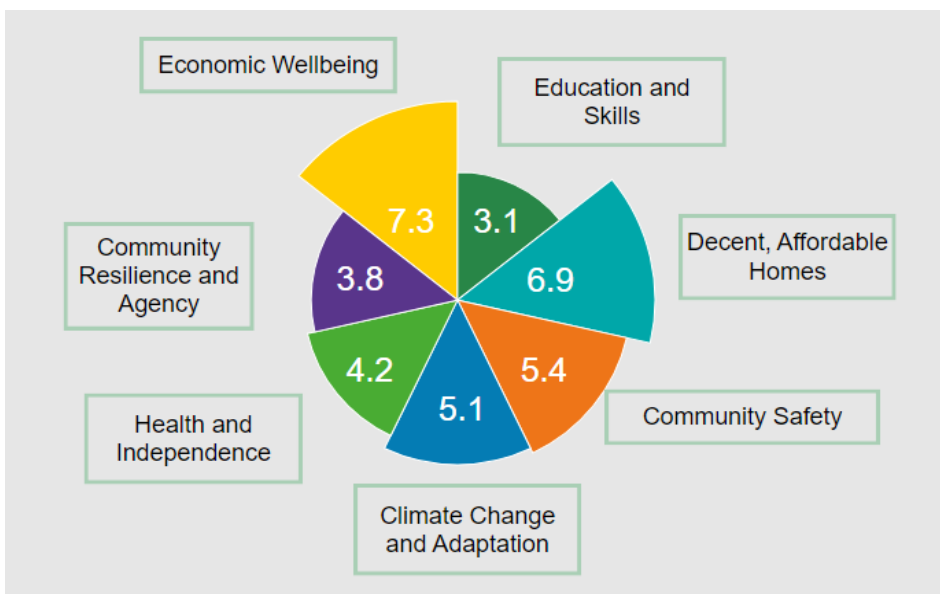


Improving joined up system
working and oversight to support
Healthy & Independent Lives in
Islington.

Islington Health & Wellbeing Board
March 2024

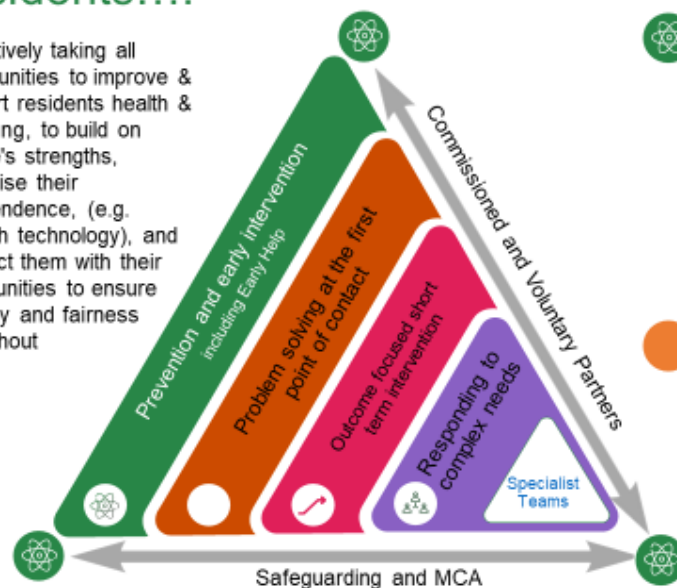
Islington: a place where people live healthier, happier, longer and more independent lives

- We need to evolve our joint governance and oversight to ensure it is robust for the future to deliver our ambitions
- We need an 'engine room' to drive our partnership vision, outcomes & priorities, improving health and reducing inequalities
- We need to be informed and guided by data, Insight and resident voice & experience



Joining up as a system to deliver maximum impact for residents....

Proactively taking all opportunities to improve & support residents health & wellbeing, to build on people's strengths, maximise their independence, (e.g. through technology), and connect them with their communities to ensure equality and fairness throughout



Prevention and early intervention
Work proactively to prevent, reduce & delay deterioration of health, mental health, wellbeing and wider determinants of health & build on residents' skills, resilience and independence, within their local communities.

Outcome focused short term interventions
A system wide focus on maintaining or improving independence by initiating rapid, short term creative interventions that support people to recover quickly.

Problem solving at the first point of contact
Highly skilled staff utilising a strengths-based approaches to ensure a proportionate response to problem solving and addressing escalating health, social & care needs at the point of contact

Responding to complex needs
Holistically managing complex needs & situations, to achieve the best outcomes for the individual & family .

Current Arrangements

North Central
London ICP

Islington's
Borough
Partnership Board

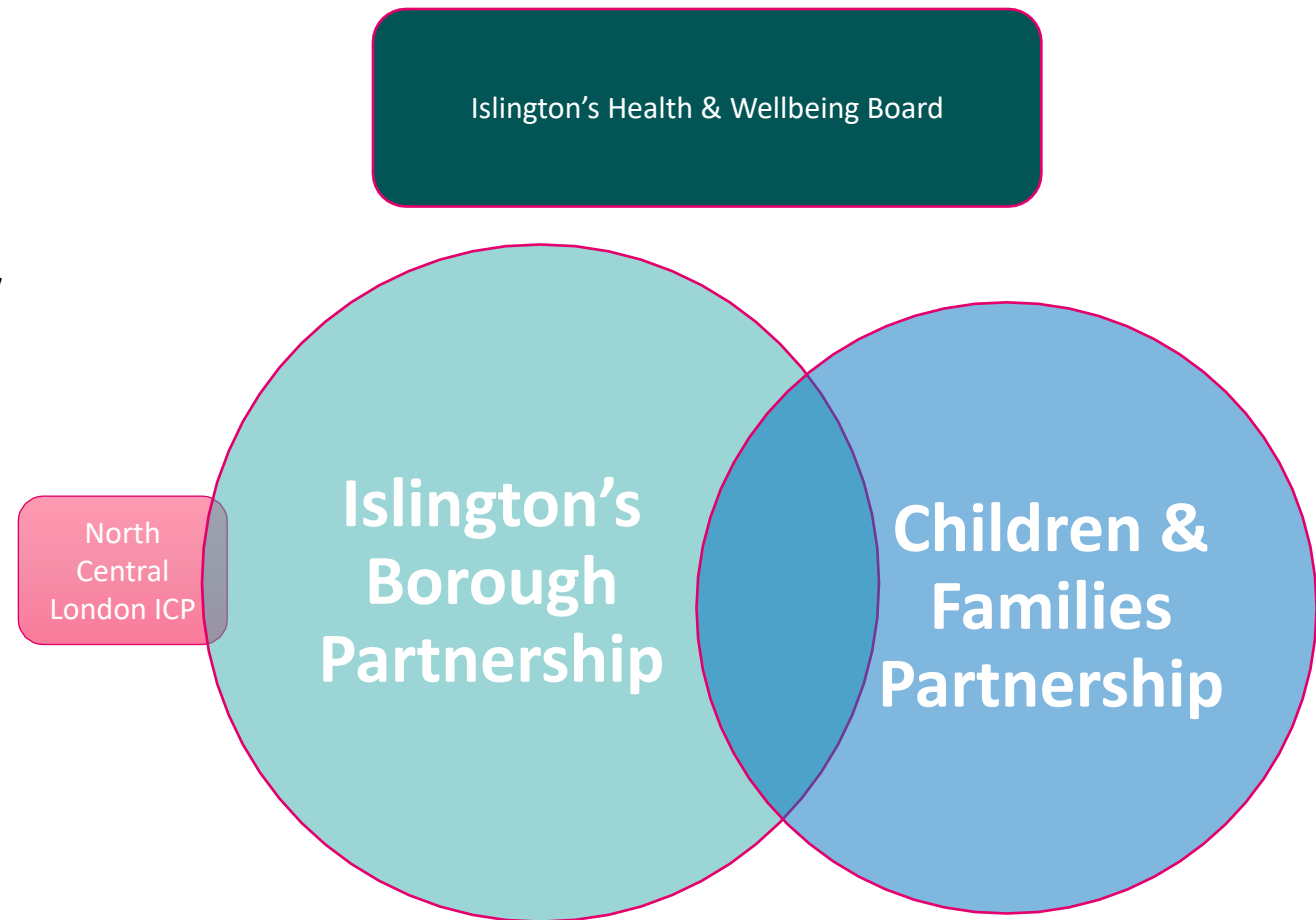
Islington's
Health & Wellbeing
Board

Fairer Together
Partnership
Board (Early
Intervention &
Prevention)

Children &
Families
Partnership
Board

Proposed Arrangements

- There is an opportunity to **review & refresh of the H&WBB** to enable **oversight and steer from political leadership** and help **drive a population health** approach across the system to reduce health inequities would support developments.
- The **Fairer Together work focusing on prevention and early help** (e.g. Coaching Offer & Access Islington) is now at a stage where it makes sense to integrate it with this work and **build into the IBP governance** given those system partners involved are similar. This will **reduce the risk of duplication and miscommunication**.
- There is an opportunity to **work more collaboratively with the Children and Families Board** to ensure join up on key shared priorities relating to health and care and ensure system connectivity. E.g. Locality Development.
- The **Islington Borough Partnership Board (IPB)** has evolved into **the locus for improving health and care** with deliverables, **underpinned by our Population Health and Health & Care Integration Strategies & tackling Health Inequities**.



Actions in progress

- Refresh the approach and Term of Reference (TOR) of H&WBB, to include the oversight, tracking, delivery & impact of all relevant work associated with Prevention & Early Help (including the Fairer Together Early Help work). It is proposed that we move to this way of working from the next H&WBB, with the timeline for amending the TOR being confirmed.
- Islington Borough Partnership (IBP) will become the 'Engine Room' with partners to drive the key ambitions to ensure Islington is a place where people live healthier, happier, longer, and more independent lives. This will include the Fairer Together early help work, with the associated governance and attendees merging with the IBP.
- A designated senior representative from the Children's & Families Board and LBI's Community, Wellbeing and Engagement Team to join the IBP to support further join up and collaboration across the work areas.
- Review and align the workstreams of Islington Borough Partnership, Fairer Together - Early Help programme and the Children & Family Board where there is natural synergy and the opportunity to deliver better together. E.g., Access Islington Hubs/Children & Family Hubs/Health/Care Locality Teams, Locality Leadership Teams.
- Align and develop a systemwide approach to using data, insight, and resident voice to inform developments and measure the impact of the work we do together. This is being aligned to Islington's Wellbeing Index developments, NCL's Population Health Outcomes Framework and our Key Performance Indicators for specific projects.

Questions & Comments?